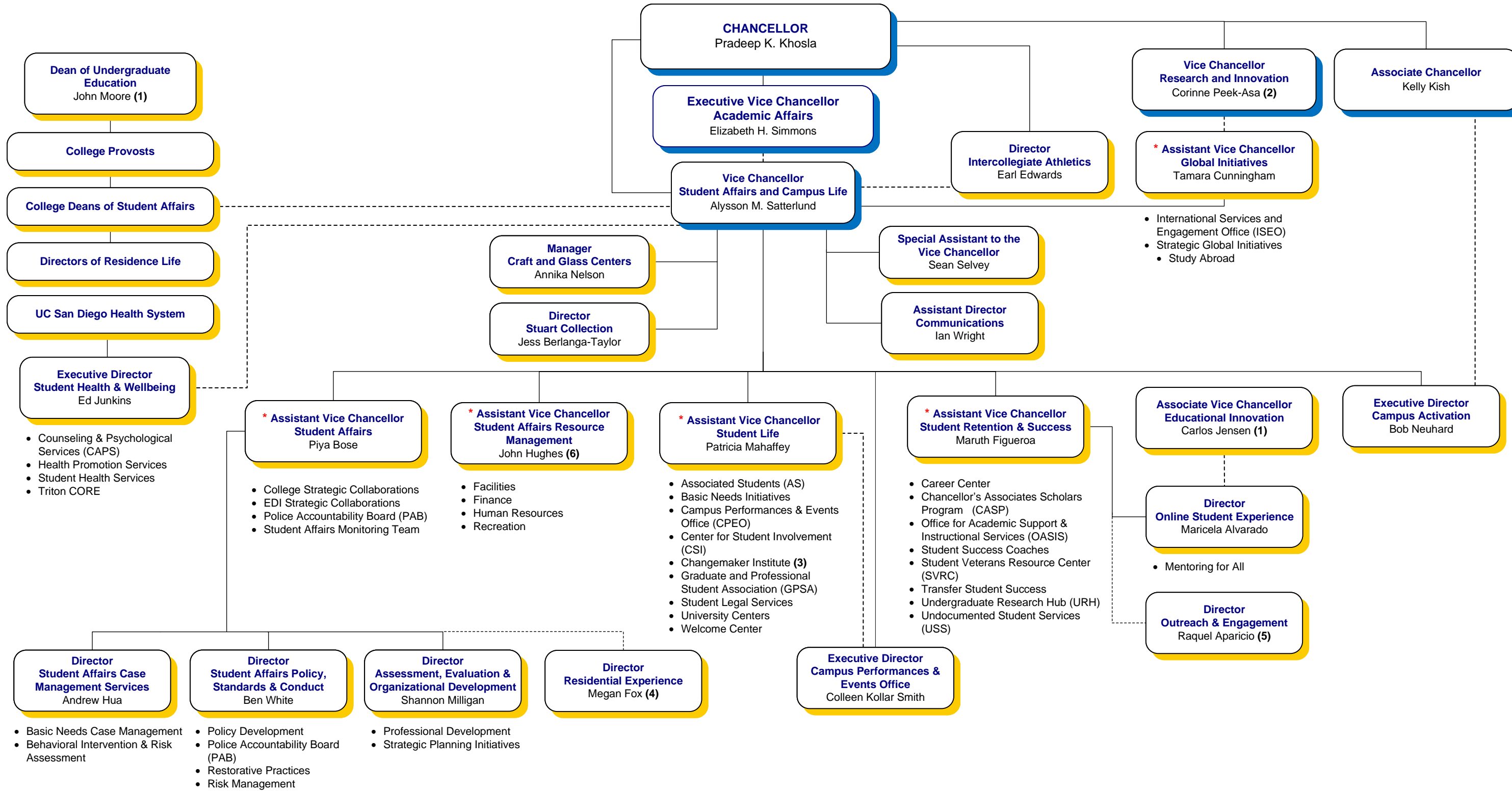


VICE CHANCELLOR - STUDENT AFFAIRS AND CAMPUS LIFE ORGANIZATION CHART



- International Services and Engagement Office (ISEO)
- Strategic Global Initiatives
 - Study Abroad

- Counseling & Psychological Services (CAPS)
- Health Promotion Services
- Student Health Services
- Triton CORE

- Basic Needs Case Management
- Behavioral Intervention & Risk Assessment
- Policy Development
- Police Accountability Board (PAB)
- Restorative Practices
- Risk Management

- Professional Development
- Strategic Planning Initiatives

* Acts for the Vice Chancellor in her absence
 (1) Reports to Executive Vice Chancellor
 (2) Has a dotted line to the Executive Vice Chancellor
 (3) Managed jointly by Equity, Diversity, and Inclusion, Jacobs School of Engineering, Rady School of Management, Teaching + Learning Commons and Vice Chancellor Student Affairs
 (4) Reports to Director, Housing Services
 (5) Reports to Enrollment Management
 (6) Has a dotted line to the Vice Chancellor and Chief Financial Officer