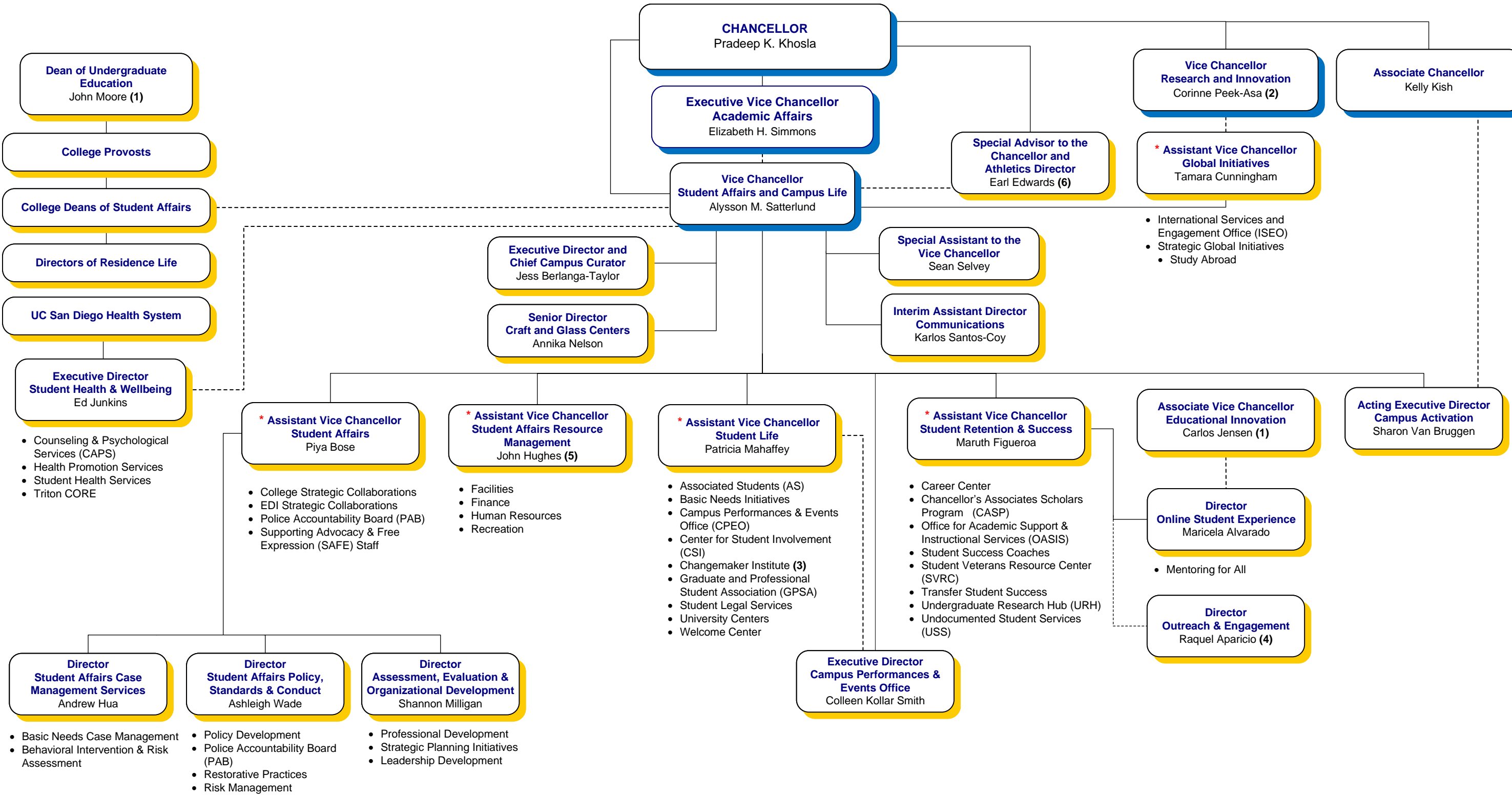


**VICE CHANCELLOR - STUDENT AFFAIRS AND CAMPUS LIFE ORGANIZATION CHART**



- International Services and Engagement Office (ISEO)
- Strategic Global Initiatives
  - Study Abroad

\* Acts for the Vice Chancellor in her absence  
 (1) Reports to Executive Vice Chancellor  
 (2) Has a dotted line to the Executive Vice Chancellor  
 (3) Managed jointly by Equity, Diversity, and Inclusion, Jacobs School of Engineering, Rady School of Management, Teaching + Learning Commons, and Student Affairs and Campus Life  
 (4) Reports to Enrollment Management  
 (5) Has a dotted line to the Vice Chancellor and Chief Financial Officer  
 (6) Has a dotted line to the Associate Chancellor and Chief of Staff