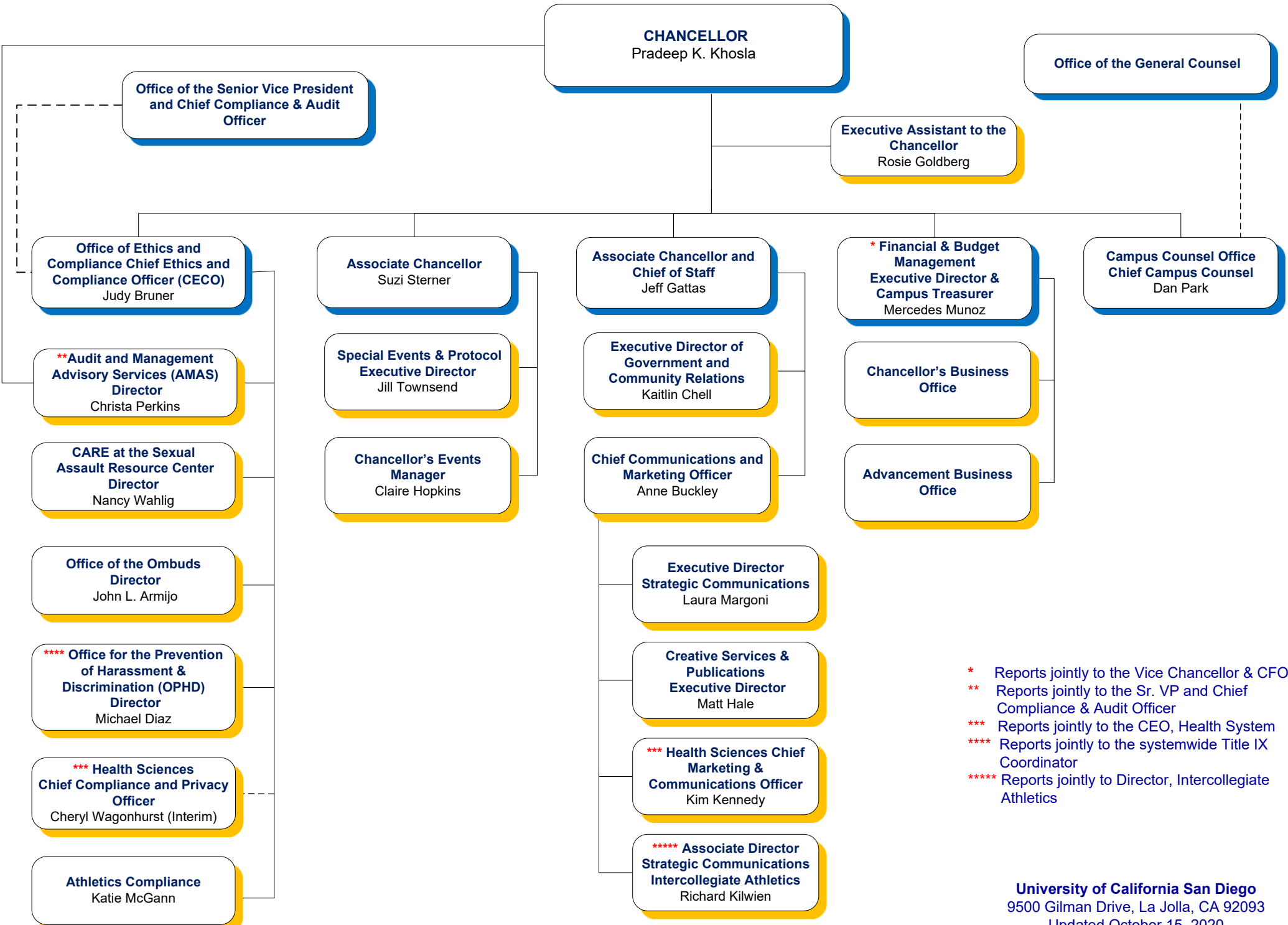


CHANCELLOR'S OFFICE ORGANIZATION CHART



- * Reports jointly to the Vice Chancellor & CFO
- ** Reports jointly to the Sr. VP and Chief Compliance & Audit Officer
- *** Reports jointly to the CEO, Health System
- **** Reports jointly to the systemwide Title IX Coordinator
- ***** Reports jointly to Director, Intercollegiate Athletics